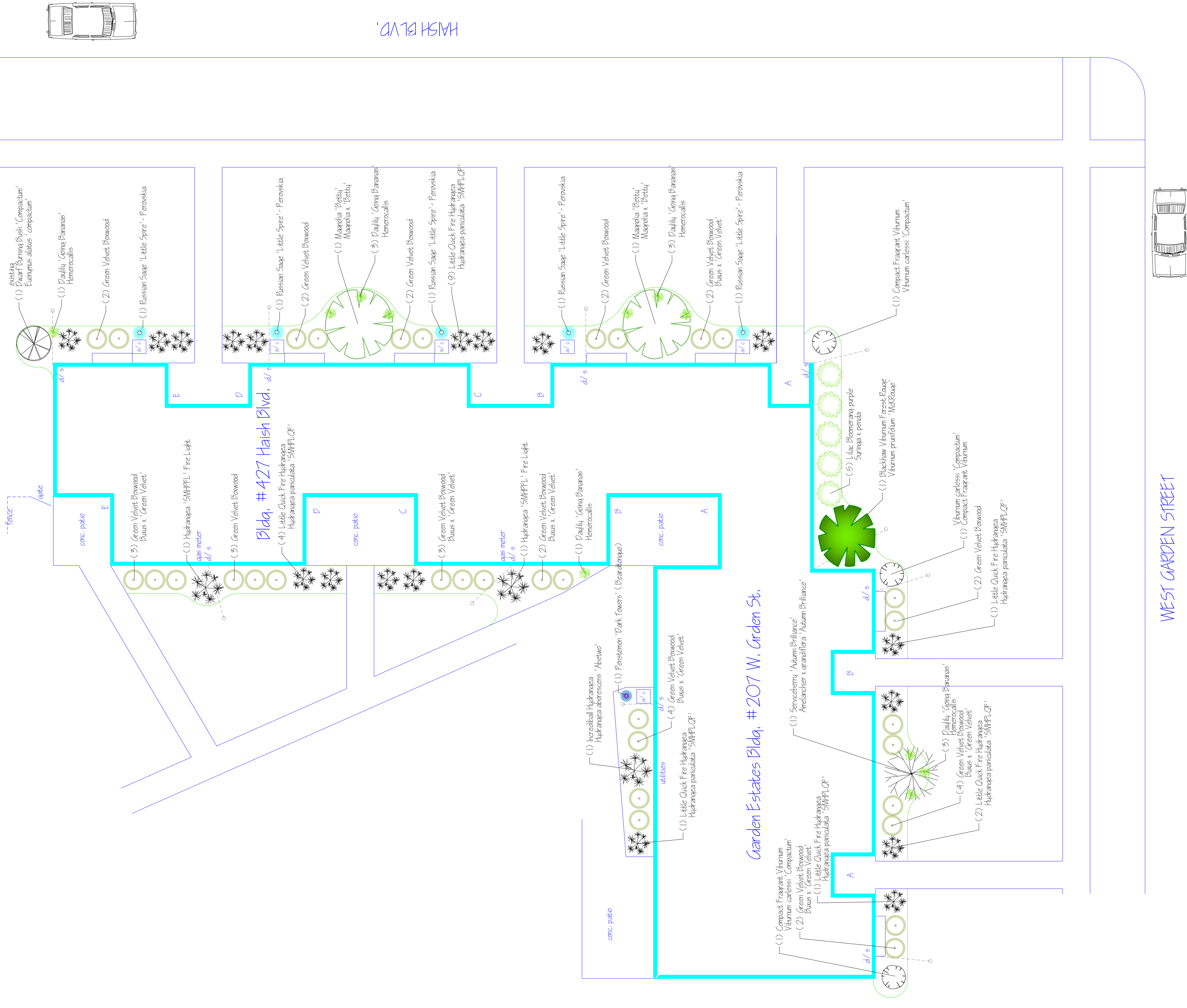
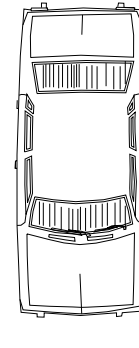
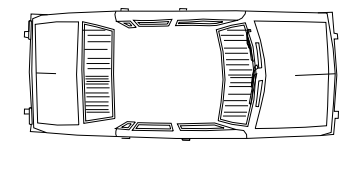


Notes: All new foundation planting beds to be graded away from foundation for positive drainage. Prior to any new plantings, pulverized black topsoil must be brought up high enough for positive drainage. Finished planting bed grade must be at least 3.0" below existing height of the bottom of the building siding or 3.0" below foundation height. Finished height includes mulch or decorative stone height.

Additional Notes: All existing downspouts must include a 4.0" diameter flexible drain tile with professional downspout adapters including gables and pop-up connectors below grade at least 6.0' out from foundation positively discharging into turf areas away from foundation. (Unless existing drain tile is already in place.)



HASH BLVD.



WEST GARDEN STREET

